

Putting the finishing touch to high quality living...



SULTACO سلتاكو

GENERAL TRADING LLC للتجارة العامة ذ.م.م

Since 1968



Who We Are

H.E. Sultan Bin Rashed Al Dhaheri together with two partners and a staff of 8 persons founded Sultaco in 1968. During 1981, SULTACO became 100% locally owned and has since continued with its growth program. The company currently employs around 123 people and has state of the art offices, luxurious showrooms and warehouses in **Abu Dhabi, Dubai** and **Al Ain**, with the Head Office located in **Abu Dhabi**.

SULTACO has built an impeccable reputation for **QUALITY** and distinctive **SERVICE** and a name that one is proud to be associated with, representing more than 30 internationally renowned brands. Products supplied for all divisions comply with American / European norms and standards as well as **ESMA**, **ESTIDAMA** and Dubai Green Building requirements.

SULTACO is committed to the quality objective of delivering its products and services as per the contractual specifications at all times to ensure continuous customer satisfaction. In that respect, **SULTACO** implements and maintains a Quality Management System that satisfies the requirements of ISO 9001-2015 International Standard.

H.E. Sultan Bin Rashed Al Dhaheri

Philosophy

Sustaining a healthy community and a clean environment leads us to a brighter future.

Objectives

Maintain Sultaco brand as a leader and pioneer in the world of building materials.

Services

Sultaco is a full service supplier of building materials, specialized in all Residential types, Hospitality, Health care & Education.

Our services include technical consultation at design phase. Design, supply and installation of Domestic kitchens and Industrial kitchens, and supply and installation of LVT (luxury vinyl tiles) projects.

Divisions

Bathroom Fixtures and Accessories

Domestic Kitchen

Industrial Kitchen and Laundry Equipment

Surfaces (Luxury Vinyl Tiles(LVT), Ceramic & Porcelain Tiles, Slabs & Mosaics)

Waterproofing

Environmental Policy

In our quest to provide our clients with world-class products and professional service, Sultaco, with its reliable business partners, comply and are strongly committed to the environmental issues. We do our best to look after the welfare of our employees, clients and the community at all times.

Saving energy and preserving the environment are two essential issues that we value, and accordingly, we undertake to promote:

- Environmental awareness throughout the organization.
- Energy saving policies, applicable environmental laws and regulations or legal requirements of the government institutions, under the current Health, Safety and Welfare Act and the Environmental Protection Act.
- Safe and healthy working environment for our employees, with adequate facilities appropriate to the nature of our business activities and minimal exposure to harmful risks.

Our principals invest on constant research and development to deliver world class products, with the use of appropriate technology that will protect and preserve the environment at the same time.

We choose to be responsible with our products and services to achieve sustainability of the environment and quality solution.

Quality Policy

Sultan Bin Rashed (Sultaco), established in 1968, is a nationally owned trading company with branches throughout the Emirates. We offer a comprehensive product mix for the building industry and enjoy a reputation for the Quality of our products and Services.

With the constant need to uphold and improve upon this reputation, we are committed to the quality objective of delivering our products and services as per the contractual specifications at all times to ensure continuous customer satisfaction.

In order to achieve the above quality objective and to continuously improve our system, we implement and maintain a Quality Management System that satisfies the requirements of ISO 9001-2015 International Standard. In this respect, we have appointed a Quality Management Representative to ensure implementation and continuity of the system.



Bathroom Fixtures and Accessories



Ceramica Dolomite Founded in 1965 in Trichiana (now Borgo Valbelluna), Italy, at the foot of the Belluno Dolomites Experts in bathroom ceramics since the beginning, the company combines a passionate and skilled workforce with innovative, automated manufacturing technology. Attentive to product quality and evolutions in designs, and firmly focused on customer service, over the years the company has become a leading brand in the market for bathroom furniture and public convenience products. Today, Ceramica Dolomite produces bathroom suites, and products for utility, kitchen and community spaces at its facility spanning some 70,000 m², reducing waste and recycling waste products to protect the environment.

Ideal Standard is the flagship brand of Ideal Standard International. The products are also sold under its strong international brands Jado and **American Standard** (Latin America). With bathroom solutions as its core business, the company provides bathroom furnishings, fixtures and shower enclosures for residential, commercial and institutional buildings. The company's products have reflected the best in sanitary ware for over a century. Ideal Standard International is driving forward wellness through- innovation by developing design and technology-based intelligent bathroom solutions. It balances performance and style. This combined with quality offers long-term value for end users.

Oli is a leader for over 30 years in manufacturing flush cisterns, mechanisms and components for vitreous china flush cisterns.

Geesa from Netherlands was founded as a coppersmith in 1885 and has been producing bathroom accessories since the 1930s, when the first soap dish was made.

Acquaviva Started in 1958, today Acquaviva has transformed itself into undisputed leader in the bath fittings category. Acquaviva is built on the platform of highest quality standards, aesthetics and with the intent of providing world class products.

HIB, established in 1990 by Warren Ginsberg, started out as a small bathroom mirror business in North London before rapidly expanding with a Tamworth distribution operation to keep up with escalating demand.

Arca is an Italian based company specialized in the bathroom world.

Schell is a manufacturer of high-quality fittings for building technology. Their products are “Made in Germany” from the initial idea to the finished product providing perfect solutions to all aspects of intelligent fitting technology.

KWC Since its foundation in 1911, KWC's success has been based on innovative engineering, unique design, and outstanding Swiss quality kitchen sinks and Washroom and Sanitary Equipment product. based in Aarburg, Switzerland, is an industrial manufacturer with companies located around the world.

Sloan has been the world's leading manufacturer of water-efficient solutions that are built to perform, guaranteed to last, and are designed with the hopes of promoting a healthy environment through water conservation. Each of Sloan's division specializes in offering reliable products that will ultimately improve the quality of life of the customers and communities they serve.

Schwab est. in Germany since 1911, is celebrated for its durability and ease of installation. As one of the first manufacturers of concealed cisterns since 1960, it now operates as part of Fluidmaster Inc.



Alba Collection



10

WATER GETS SHAPED

Ceramica Dolomite's rimless system morphs the water, taming it and directing it, allowing it to flow across a large surface area, while also.

Ceramica Dolomite

Italy
Bathroom Suites & Brassware



Aqua-Fall System

Compared to traditional bowls with a box rim, the Aqua-Fall system by Ceramica Dolomite guarantees:

- Better Cleaning
- No Splashes
- Sustainability
- Better Hygiene
- Quieter Spaces



Product Features:

Effortless Cleaning and Hygiene:
All Ceramica Dolomite products have been carefully designed to simplify cleaning – to ensure your sanitary ware is perfectly hygienic.



Hidden fixtures: For clean lines and a clean product:
All new toilets and bidets, whether wall-hung or floor-standing, have hidden fixtures. As well as giving the products a sleek design, they make the sanitary ware easy to install correctly and also simplify cleaning.

Water-Repellent Glaze
Ceramica Dolomite enamels are water repellent, making them easy to clean and preventing dirt and limescale from depositing and building up.



Quick-Release Seat:
All new, soft-close seats are fitted with a quick-release mechanism. The seat is quick and simple to take off, making it easy to clean all surfaces



Ceramica Dolomite

Italy
Bathroom Suites & Brassware



12 Bathroom Fixtures and Accessories



Gemma2 Collection



Mayka Collection



Mirto Collection



Mia Collection

13 Bathroom Fixtures and Accessories



Ceramica Dolomite

Italy
Bathroom Suites & Brassware



AquaBlade® TECHNOLOGY

THE MULTI-AWARDWINNING AQUABLADE® – A NEW ERA IN FLUSH TECHNOLOGY

The most significant development in the product category since the invention of the flush toilet in the 19th century, AquaBlade®, was launched by Ideal Standard in 2015, and its exclusive and patented technology offers superior flushing, even at low water volumes. AquaBlade® technology sets new standards in both toilet design and optimum flush performance – the smooth, gently curved surface with no overhanging rim also means it is much more hygienic and easier to clean; it is quieter in flush, and has an all-round smarter design.



Ideal Standard

International
Bathroom Suites, Brassware and Acrylics

EXCEPTIONAL FLUSH PERFORMANCE

AquaBlade™ Technology gives a superior flush performance every time.

With no overhanging rim, the water flows from the very top of the bowl rinsing 100% of the area beneath.

The integral channel creates a pressurised cascade of water which flows round the bowl creating two strong jets at the front. These merge to form a powerful plume of water that drives away solid matter effortlessly.



UNRIVALLED HYGIENE

AquaBlade™ Technology outperforms all existing toilets in terms of hygiene.

Traditional toilets leave a significant area of the bowl unwashed particularly at the back of the bowl. The AquaBlade™ channel is positioned close to the top of the bowl so 100% of the surface area beneath is rinsed clean every time.

AquaBlade™ Technology is also more hygienic than leading rimless toilets. These may harbour bacteria around the shelf plus water can often splash over the bowl during flushing causing bacteria particles to be released into the air.

With AquaBlade™ Technology, the optimised water pressure and the smooth curves of the bowl flush bacteria clean away with no unhygienic splashing.



With traditional box rimmed toilets, approximately 20% of the bowl is unwashed.

Aquablade™ Technology ensures 100% of the surface area below the channel is rinsed clean.

EASIER TO CLEAN

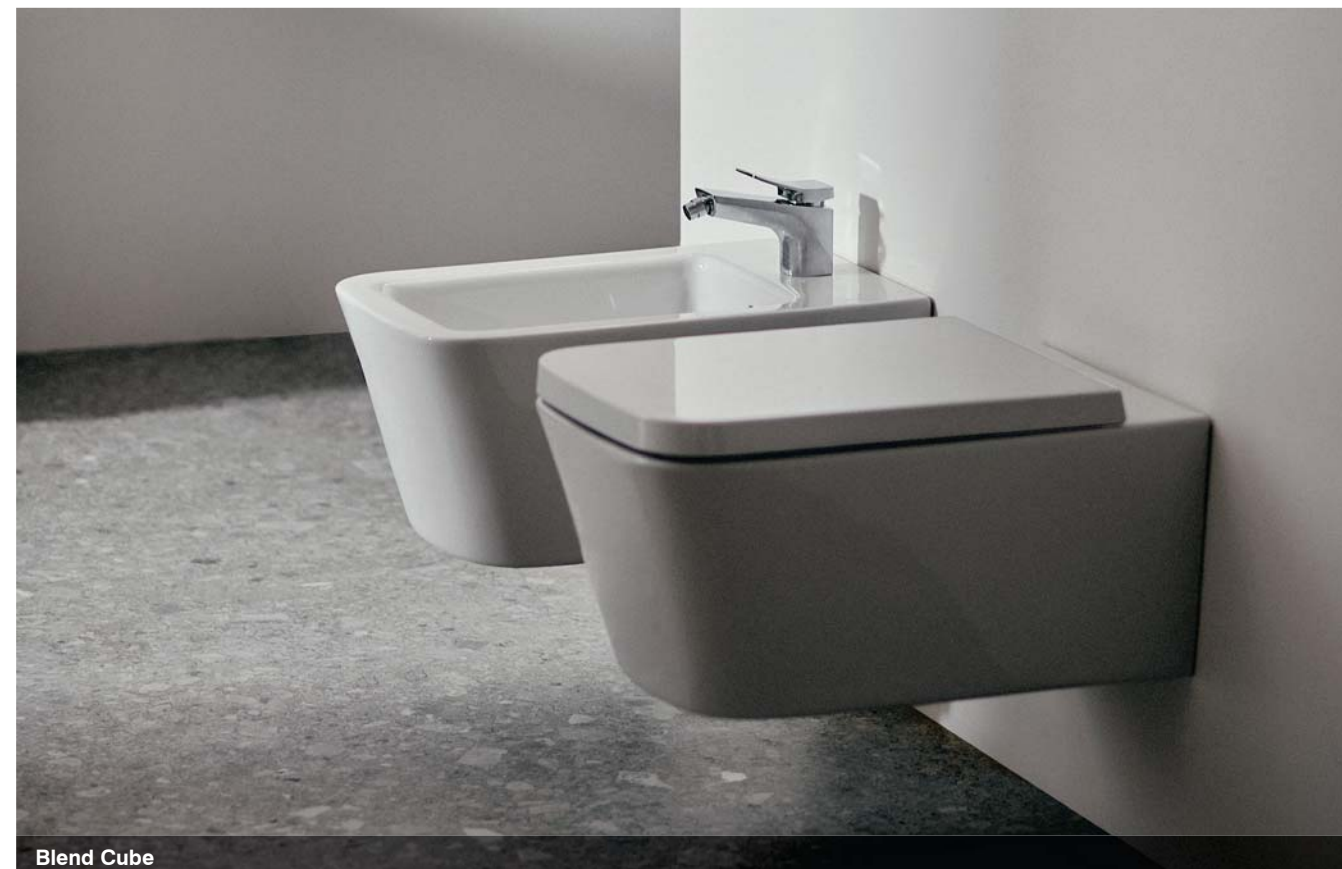
AquaBlade™ Technology powerfully rinses the whole bowl clean with every flush and its gentle curved shape makes it easy to wipe with minimum effort.





Ideal Standard

International
Bathroom Suites, Brassware and Acrylics



Blend Cube



Tesi

Ideal Standard

International
Bathroom Suites, Brassware and Acrylics



Edge



Tonic II



Joy

American Standard

International
Bathroom Suites, Brassware and Acrylics

American Standard
Style That Works Better



IDs



Cadet



Tropic

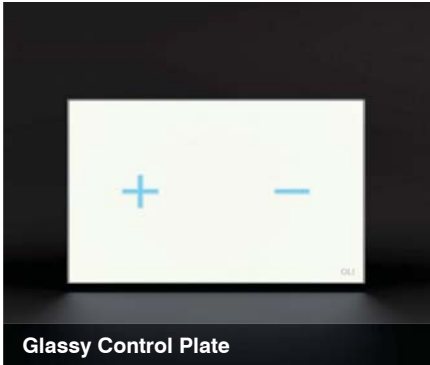


Town Square

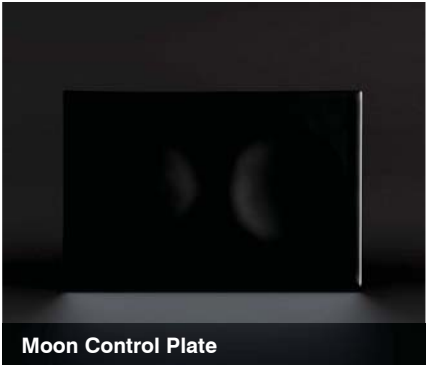


Oli

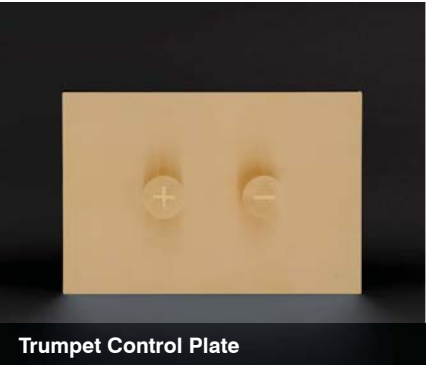
Portugal & Italy
Flush Systems



Glassy Control Plate



Moon Control Plate



Trumpet Control Plate



Slim Control Plate



Tribe Control Plate



River Control Plate



Oli74 Simflex Happy Air



Concealed Tank



QR Inox



Shift Brushed Gold

Geesa

Netherlands
Bathroom Accessories

geesa.



Opal Collection



Leev Collection



Shift Collection



Topaz Chrome

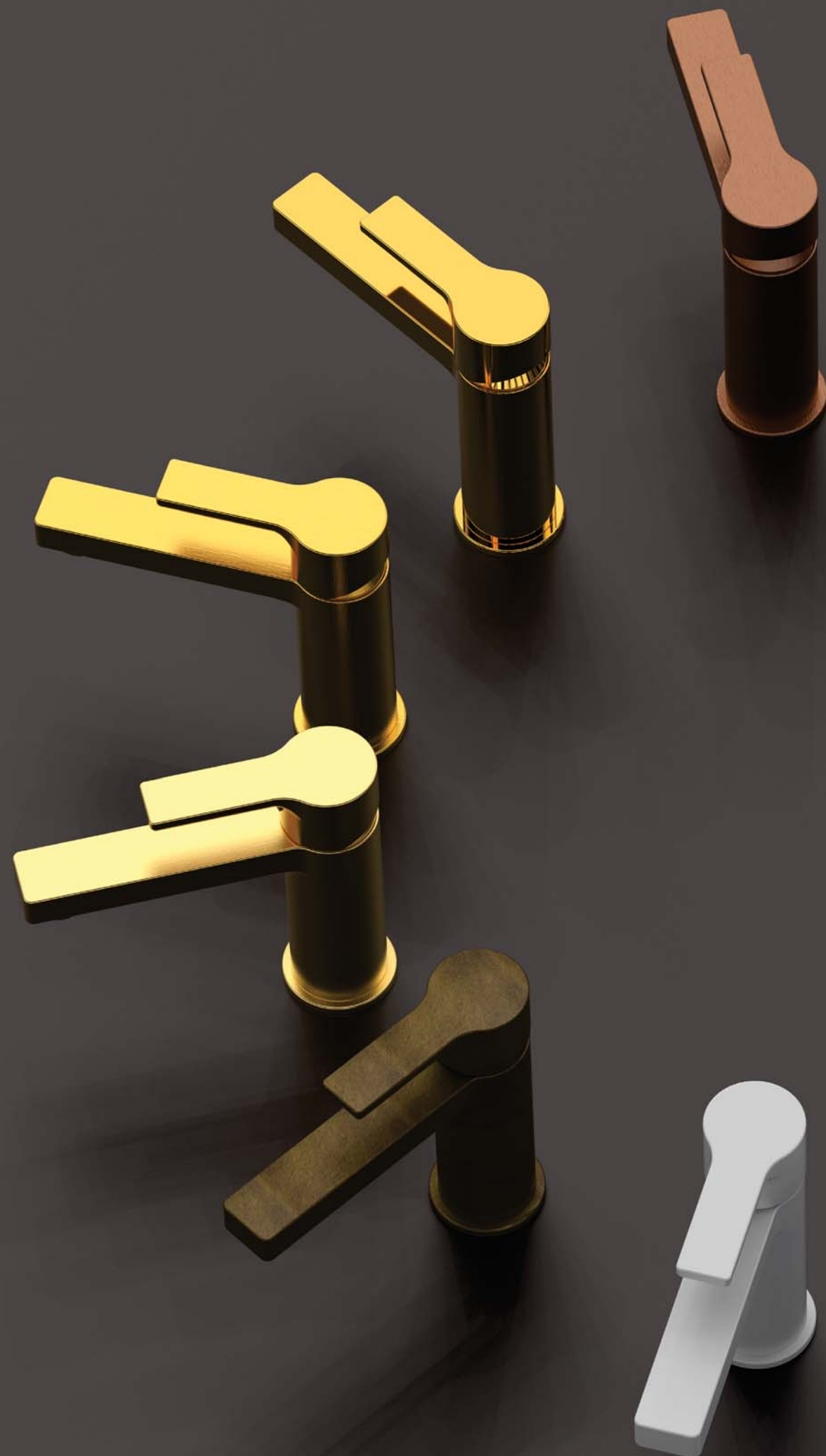


Craft Collection

Acquaviva

India

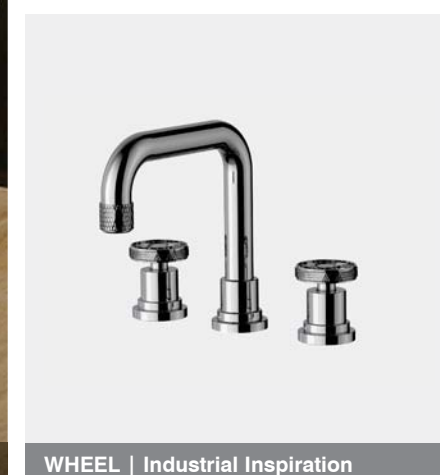
Faucets, Accessories & Acrylics



Free Standing bath - Westin



Free Standing bath - Elinea



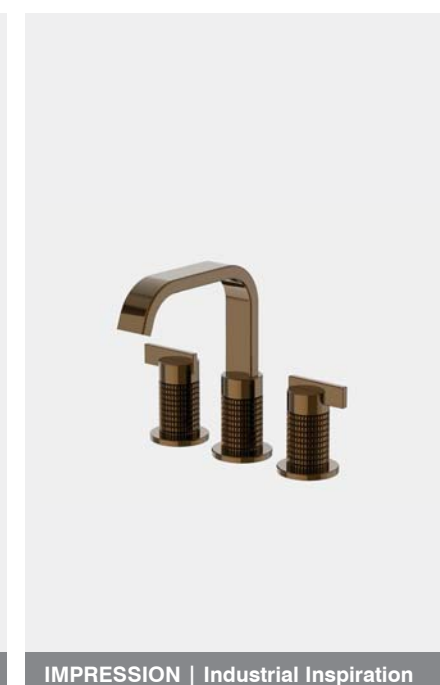
WHEEL | Industrial Inspiration



SATVARIO | Industrial Inspiration



CASCADE | Contemporary



IMPRESSION | Industrial Inspiration

HIB

UK
Mirrors



Arca

Italy
Bathroom Ancillaries





Schell

Germany
Electronic and Self-closing Faucets, Flush Valves and Angle Valves



KWC

International
Accessories & Fixtures



Puris Tap



Tipus P Electronic Self-closing Tap



Edition E Urinal Flush Valve



Schelltronic Infrared Urinal Flush Valve



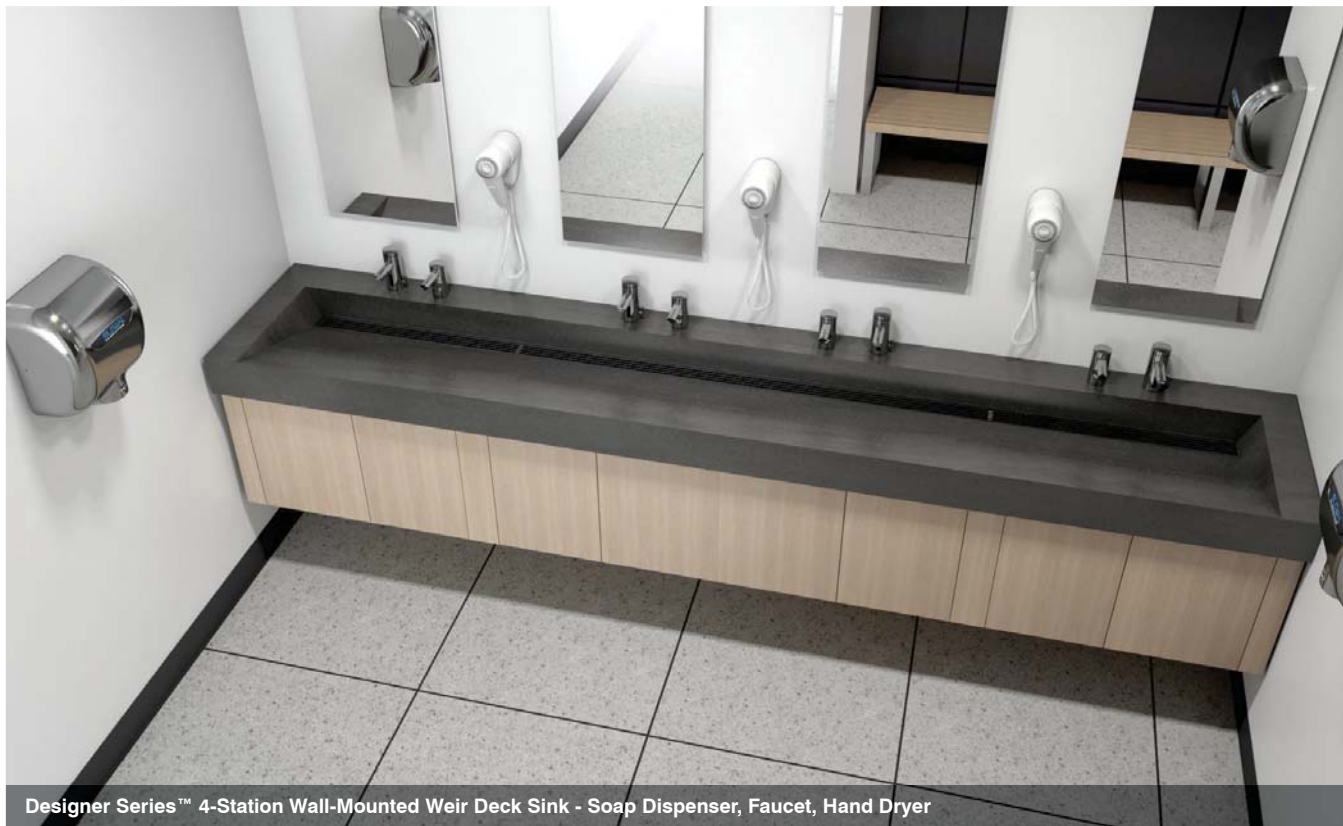
STRATOS
SANITARY ACCESSORIES



RODAN
SANITARY ACCESSORIES



AER-DEC Integrated Sink - Soap Dispenser, Faucet, Hand Dryer



Designer Series™ 4-Station Wall-Mounted Weir Deck Sink - Soap Dispenser, Faucet, Hand Dryer



Royal Flushometer (Manual)



Royal Flushometer (Retrofit)



Royal Flushometer (Sensor)



TruFlush Flushometer



CX Sensor Flushometer



Soap Dispenser pairs with Basys



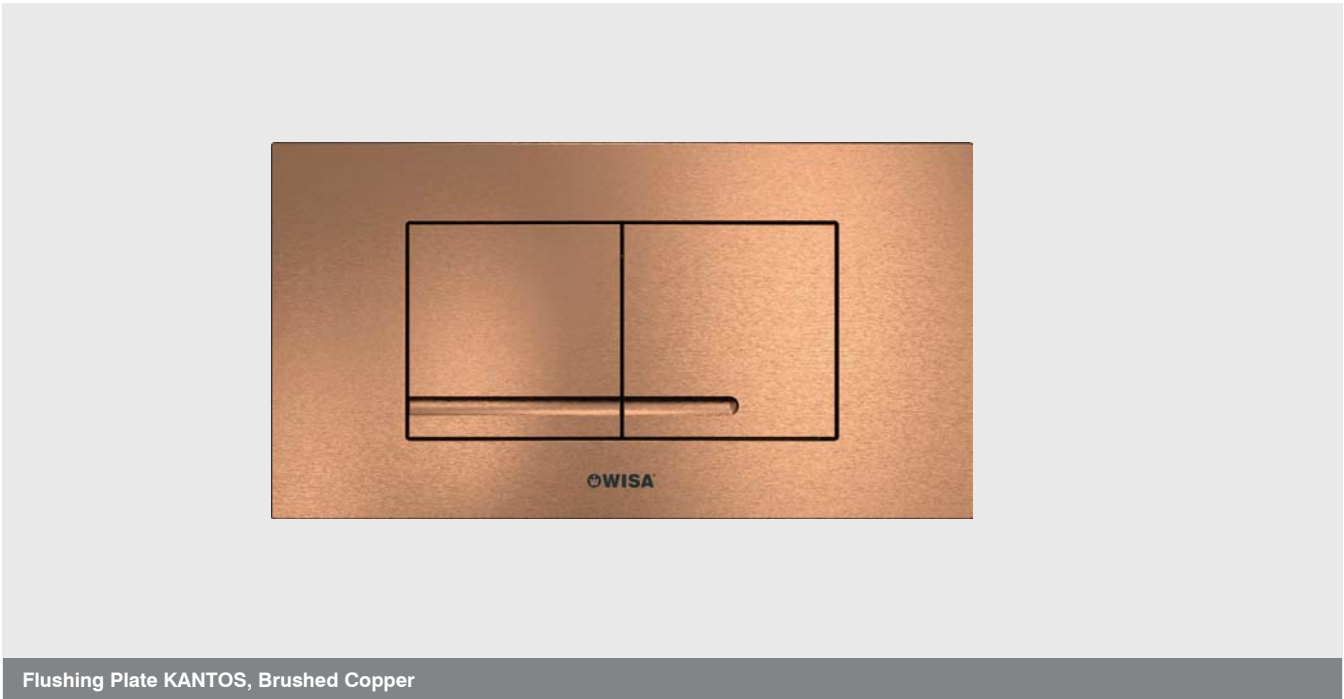
Soap Dispenser pairs with Optima



Flushing plate GAIOS DUO GLASS, Black



Flushing Plate VELA, Bright Chrome



Flushing Plate KANTOS, Brushed Copper



Duplo WC 199



Duplo WC 387



Set WC 199

Domestic Kitchen

Design, Supply and Installation



Kuhlmann Since 1923, the Kuhlmann family has been working on your “dream kitchen” for generations. A life task that has driven the further development of the fitted kitchen under constantly growing demands. We take over this tradition and continue it in our industrial manufactory in the spirit of our artisan history and work on it every day with great passion.





Industrial Kitchen and Laundry Equipment

Design, Supply and Installation



Ata Srl, established in Italy in 1984, manufactures high-quality commercial cooking equipment and commercial dishwashers. ATA's steady growth has been marked by various stages of development: attentive manufacturing combined with a vision of how to manufacture. The ATA brand guarantees quality, safety and reliability.

Ilsa Spa, founded in 1979 where it started as a producer of special semi-finished products on third parties' designs. Today, it manufactures its own line of furniture for pastry shops, bakeries and ice cream shops, refrigerated tables, display cases, blast chillers and shock freezers. Ilsa's future commitments lie in the improvement of products and services through constant research activity. Ever since it was founded, Ilsa has considered quality as a major priority.

Nilma, designs and manufactures machineries for the catering sector and the food industry. A specialist in the industry since 1956, Nilma combines respect for Italy's fine food tradition with automated systems specifically designed for the sector. The company also designs machinery and plants to the customer's requirements and now exports to 60 countries all over the world.

Art Serf Spa, specialized in the design and manufacture of containers of elements dedicated to the preservation, distribution of food and drink in the restaurant of the community and the public exercises, in particular self-service facilities.

Inoxtrend, located in North-east of Italy, produces professional ovens for the catering industry. Inoxtrend's quality standards derive from specialization, constant research and interaction with customers. The Inoxtrend brand is positioned in the medium-high level of the market, and offers a competitive and attractive proposal for all sectors of the catering industry. All their ovens are "Made in Italy" with high quality standards and attention to design.

Meiko, is a global technology and service company, founded in 1927, that specializes in developing and offering professional warewashing, cleaning, and disinfection technology, along with sustainable food waste treatment systems. They serve customers worldwide with a focus on hygiene and efficient processes

To ensure we can meet the full spectrum of our clients' requirements, we operate a flexible sourcing strategy. This includes established partnerships with the suppliers listed herein, complemented by our ability to identify and engage with other reputable manufacturers and suppliers from the broader market as needed.



Ata Srl

Italy
Industrial Dishwasher and Cooking Equipment for Professional Use



Ilsa Spa

Italy
Stainless Steel Professional Items for Kitchens, Hotels and Restaurants



Nilma
Italy
Professional Bulk Cooking Equipment



Art Serf Spa
Italy
Stainless Steel Self-Service Equipment



Inoxtrend

Italy
Professional Ovens for Gastronomy and Catering



Meiko

Germany
Dishwasher



Surfaces



vitrogres



ENERGIE KER

BOTTEGA

Luxury Vinyl Tiles(LVT) - (Supply and Installation) Ceramic & Porcelain Tiles, Slabs & Mosaics - (Supply)

Karndean Design Flooring, founded in 1973, is one of the world's most renowned and respected luxury flooring companies with a passion for developing imaginative, innovative products - versatile, luxury vinyl flooring with the look of simply beautiful, natural floors.

Viglacera, Pioneering Green Technology Proud Of The Vietnamese Brand. On the journey towards the 50th anniversary of its establishment, Viglacera Corporation has continuously developed, creating "miracles" with a strong imprint from its strong field of construction materials to Real Estate - affirming a strong Vietnamese brand that continues to reach out internationally. With a solid foundation, achievements and glorious traditions, Viglacera will continue to enhance its position with new, comprehensive and stronger breakthroughs in the future.

Vitrogres, the mosaic company from Vitoria-Gasteiz and a leading mosaic brand for decades, is the heir of the traditional quality of the mosaics manufactured in the North of Spain. Vitrogres makes a bet for original quality and discovering new possibilities and decorative uses.

Rondine, 1961 saw the foundation of Rondine S.p.A., the core that grew into today's leader Ceramica Rondine, in the production of porcelain stoneware tiles for floors, walls and skirtings.

CIPA GRES S.P.A., activity began in 1967 producing tiles substrates, up to production of technical antacid porcelain stoneware tiles of today. The constant growth and commercial strengthening allowed the company to become today a reference point in the Italian and worldwide markets.

Energieker, A dynamic, constantly expanding reality, EnergieKer is a historic leader in the Italian ceramic tile sector. Born in 1986 in Pavullo nel Frignano (Modena), surrounded by the Apennine mountains and close to the core of the Italian ceramic activity, Energieker is now run by the third generation of ceramic entrepreneurs and boasts a production of over 11 million sqm sold all over the world per year.

Bottega, born within the ITALCER group in 2020, it is a young company that brings with it the know-how, skills and industrial structures of one of the main Italian ceramic groups. Research, aesthetic taste and attention to detail are the three directives that guide a company that has made its products an excellence in the luxury ceramic sector.





Spring Oak RL 01



Drift CER17



Palazzo Marble SM-RKT3012-G



Argen WP414



Aged Spanish Oak RCP6535



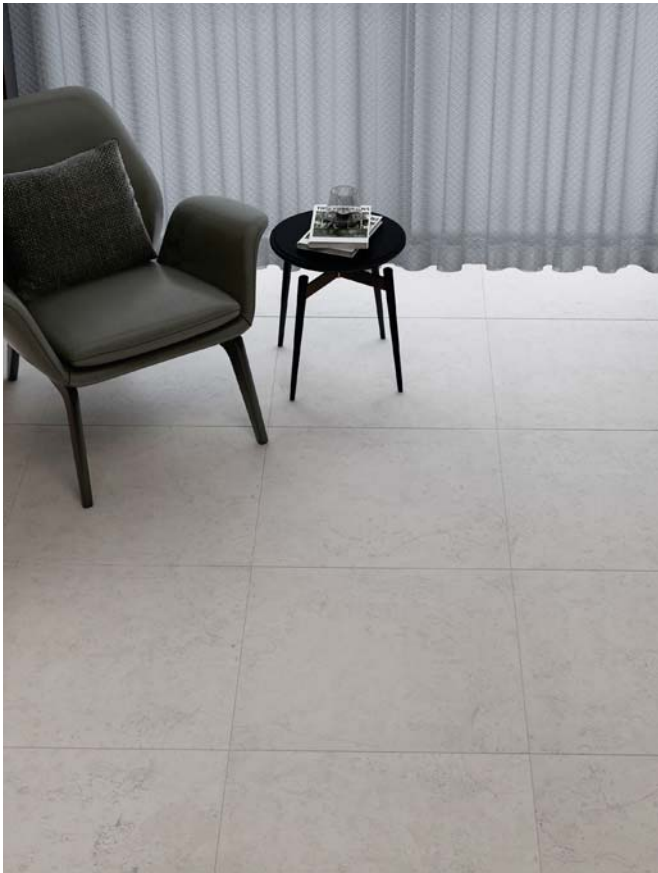
Fiore LM16 & Otono LM15



Texas White Ash RKP8105

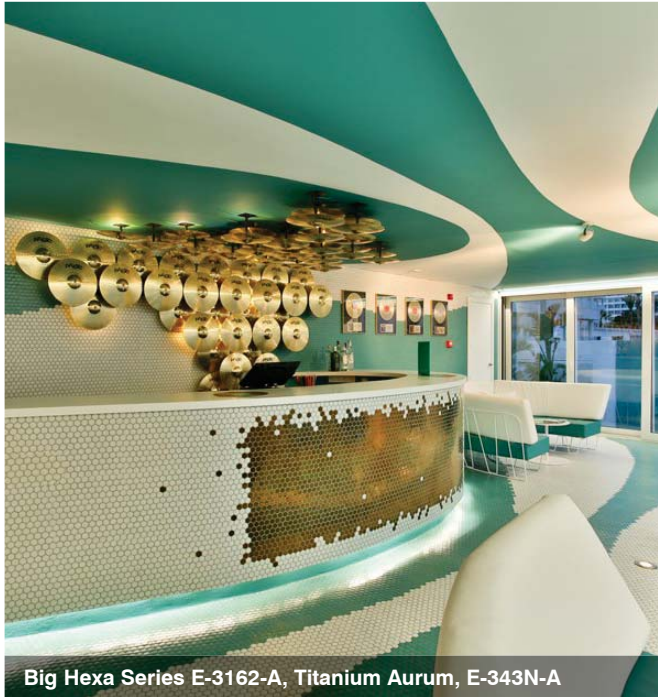


Salvaged Barnwood SM-RKP8209

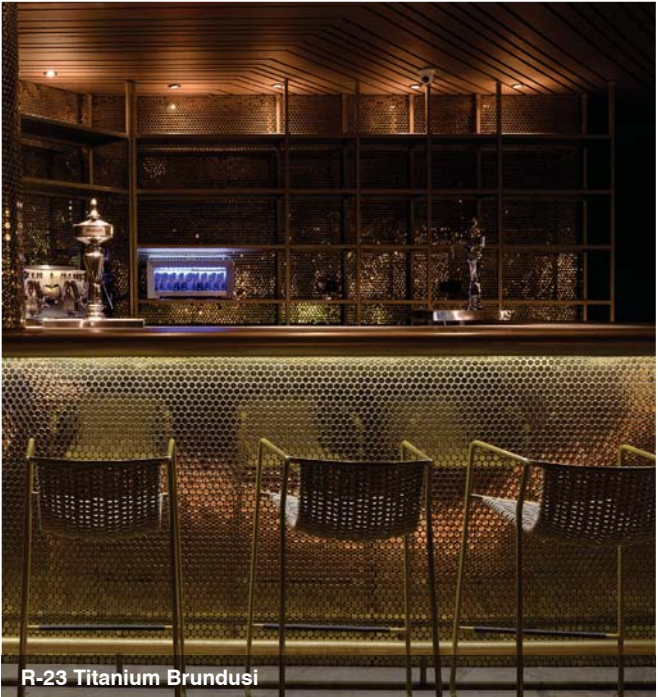


Vitrogres

Spain
Glass Mosaic Tiles



Big Hexa Series E-3162-A, Titanium Aurum, E-343N-A



R-23 Titanium Brundusi



Big Hexa E-343N-A

vitrogres

Ceramica Rondine

Italy
Porcelain Tiles



Volcano



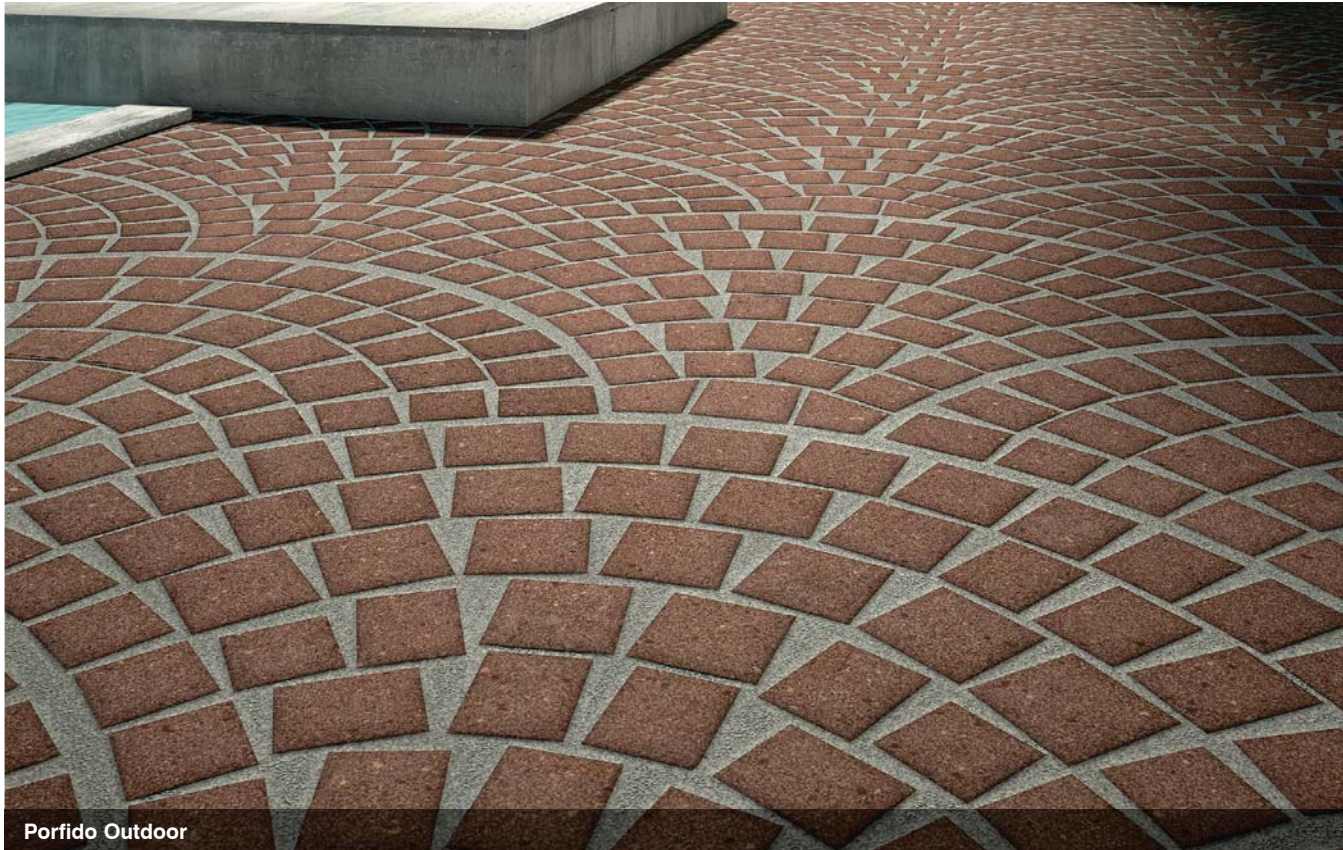
Canova

CIPA GRES SPA

Italy
Unglazed Full Body Porcelain Tile



Outdoor Tiles



Porfido Outdoor

EnergieKer

Italy
Ceramic & Porcelain Tiles

ENERGIEKER



City Plaster

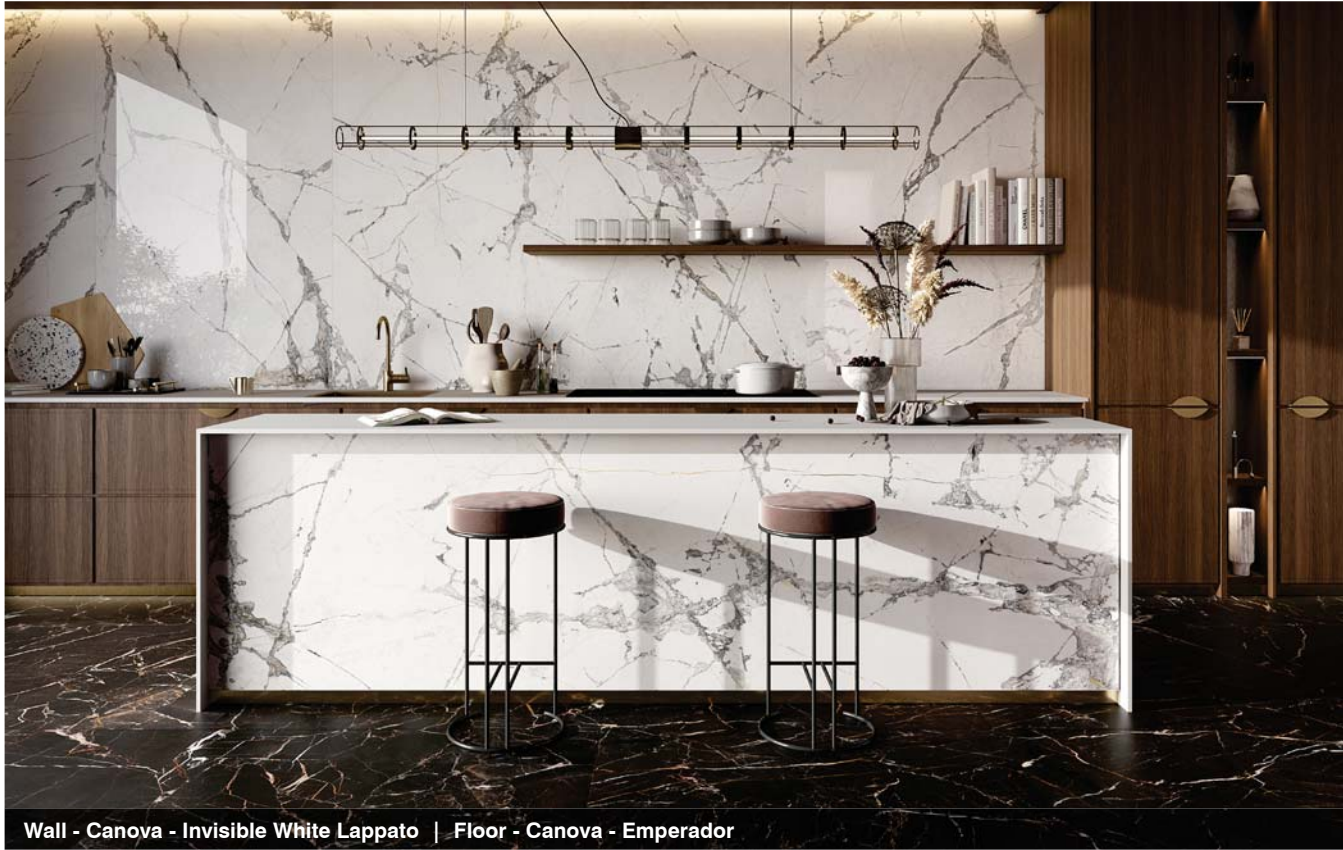


Rushmore

Bottega

Italy
Porcelain Slab

BOTTEGA



Wall - Canova - Invisible White Lappato | Floor - Canova - Emperador



Murales - Dark



Murales - Ice



Canova - Limestone



GCP Applied Technologies offers a wide range of construction chemicals and specialty building materials including air barriers, roofing underlayments, residential building materials, and structural waterproofing systems. GCP Preprufe advanced pre-applied waterproof membrane system develops an adhesive bond to poured concrete to prevent water migration, vapour and gas. Preprufe® has a worldwide track record for providing exceptional waterproofing protection of basements, underground car parks, foundations, tunnels, metros, libraries and archives, underpasses and retaining walls. GCP is integrated within the Construction Chemicals Business Unit, part of the High-Performance Solutions division of Saint-Gobain.

GCP Applied Technologies' Preprufe® Plus waterproofing system with Advanced Bond Technology™ is engineered to protect structures below ground from water ingress, corrosive soil, gas and moisture. Composed of durable and flexible HDPE geomembrane, it aggressively adheres directly to poured concrete and easily conforms to complex details to create an impermeable protective seal. The patented non-absorbent membrane surface coating resists dirt and contaminants and withstands up to eight weeks of UV exposure onsite. The membrane is immediately trafficable without protection layers allowing contractors to install rebar the same day. The Preprufe® Plus waterproofing system is fast and easy to install by only two operators and does not require primer, heat, power or special equipment. The system is a proven solution for the most challenging site conditions as well as straightforward projects in climates worldwide. The Preprufe® Plus waterproofing system forms a protective barrier for the life of the structure and is recognized as one of the most advanced and unique waterproofing solutions available for below ground structures.

How We Create Value For Our Customers



Why Customers Buy Our Products

LABOR

- Simplify installation
- Reduce labor and construction costs
- Improve safety

MATERIALS

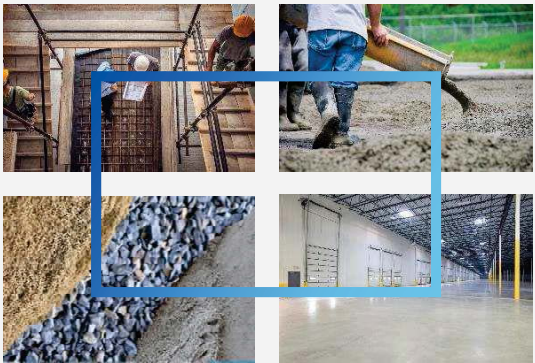
- Reduce material usage
- Improve effectiveness
- Lower energy, water consumption and customer CO₂ footprint

SPEED

- Efficient application
- Reduce construction cycle time
- Improve speed of occupancy

QUALITY

- Eliminate rejects and repairs
- Improve life-cycle costing
- Deliver on proven performance



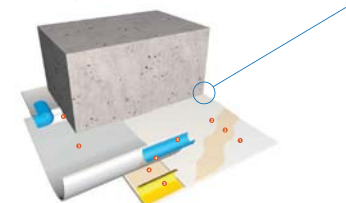
GCP Applied Technologies

UK / USA

Structural and Roofing Waterproofing Systems

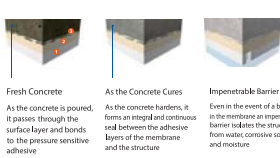


Performance: Preprufe® Plus Waterproofing System Adhesively Seals to Poured Concrete to Prevent Water Tracking



- Durable and flexible HDPE geomembrane
 - Protects concrete for the life of the structure
 - Continuous seal to complete details forming a watertight seal
- Continuous layer of waterproofing adhesive
 - Flows together with liquid concrete to create a seamless seal and eliminate tracking
 - Adhesive remains flexible for crack bridging as the concrete hardens
- Patented non-absorbent surface coating
 - Smooth, non-slip coating resists dirt and contaminants
 - Withstands up to 6 weeks of UV exposure inside

Premium Advanced Bond Technology™



A Complete Waterproofing Membrane System

GCP's below ground waterproofing system offers an extensive range of compatible waterproofing products providing continuity and performance reliability.

- Bituthene® 8000HC, a solar reflective self-adhesive waterproofing membrane, is composed of an aggressive rubberized asphalt adhesive and a full-width grey HDPE film, designed for below ground open excavation walls in temperatures up to 55°C and is especially resistant to aggressive Middle East ground conditions, radon & methane gases. Twin seal laps (adhesive and film sealings) are pre-marked ensuring the quality of the overlap. Bituthene® 8000HC has been certified by BBA for watertightness, durability and gas resistance since 1997.
- Preprufe® Tapes for detailing
 - Single layer of reinforced pressure sensitive adhesive tape protects corners and details
 - No back tapping or priming



Preprufe® Plus

HDPE FILM

Resilient and flexible for a long durability waterproofing

- Excellent chemical resistance to sulphates and chlorides
- Zero vapour permeability
- High mechanical performances with low weight
- Easy conformability for a fast application and detailing

ADVANCED BOND TECHNOLOGY™

Complete and strong bonding to concrete

- More than 20 year track record on major projects all over the world
- Prevents any water tracking between the waterproofing and the structure
- Reduces risk of leaks and remedial costs

PREPRUFE® ZIPLAP™

Innovative adhesive-to-adhesive bond at the seams

- Remains strong bond in wet and/or dusty conditions
- No need of Preprufe Tape at temperatures above 0°C
- Fast execution, immediate sealing without welding or special equipment

KICK-OUT ROLL

Easy and fast application

- Just position the roll on the horizontal substrate and kick out
- Fast unrolling expedites membrane installation
- Only two operators needed for labour cost reduction

Microscopic view of surface layer

Preprufe® adhesive and self-protected coating on HDPE membrane

RELEASE LINER-FREE

- Reduces site waste
- Reduces chances of installation error

Colour released liner

Quality and Innovation

leading the industry for decades

GCP Applied Technologies is committed to raising the standards for the industry through the development of innovative new products and practices that meet the needs and demands of its customers. Our products and factories around the world are audited several times a year by independent external European certifying bodies and comply not only to the highest standard of production but of product performance also.

Research and Development teams working in Europe, the United States and Asia Pacific, continue to improve and enhance GCP membranes to help solve complicated problems and meet ever changing market needs, without compromising on the exceptional quality and performance synonymous with the Bituthene® name. Every element has been carefully engineered to ensure product quality and performance from the lab to the job site.

Bituthene® Excellence in Waterproofing 50+ years

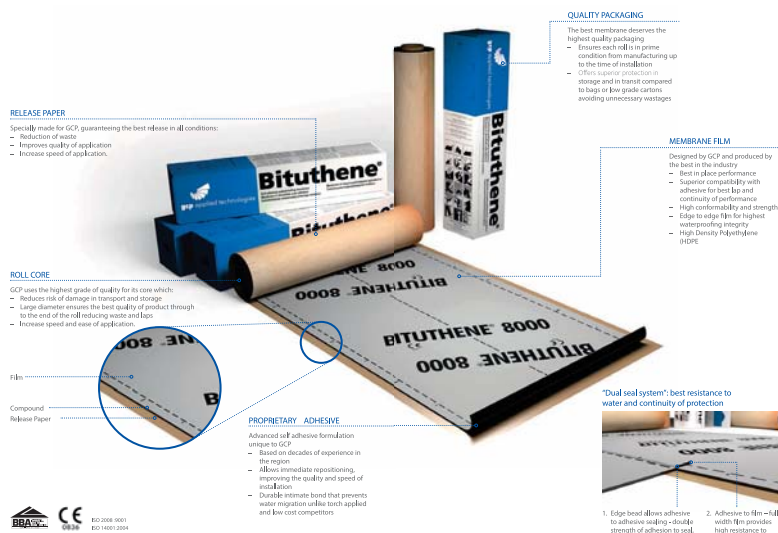
Invented by GCP in the 1960's, Bituthene® is the original cold applied waterproofing sheet membrane that has been protecting major projects across the globe for more than 50 years.

Flexible and versatile, there is a Bituthene® membrane to meet almost

any project requirement—including the most complex and demanding conditions. All Bituthene® membranes offer proven durability, strength and performance that will provide continued protection throughout the lifetime of the building.

Product Features

Engineered for the job site not a testing laboratory



Super Structure/ Infra Structure

INTEGRITANK

High performance, 2 coat cold hand or spray applied liquid waterproofing system for buildings and Cut & Cover tunnels.

INTEGRITANK®

Faster, Tougher, Safer, Longer Lasting

Fast to apply, seamless and highly durable with unlimited overcoat time, INTEGRITANK® enables schedule flexibility, labour savings, fast return to service and a proven track record of long term protection and piece of mind for the building owner.



- Unique to GCP
- Developed and manufactured in house
- Determines the performance of our products
- Over 40 years we have perfected several unique ESSELAC polymer resins
- Each allows us to tailor products to meet requirements of the application



INTEGRITANK® contains a specific ESSELAC® formulation to provide the characteristics required, combined with MMA, therefore meets MMA specifications

GCP Applied Technologies

UK / USA
Structural and Roofing Waterproofing Systems

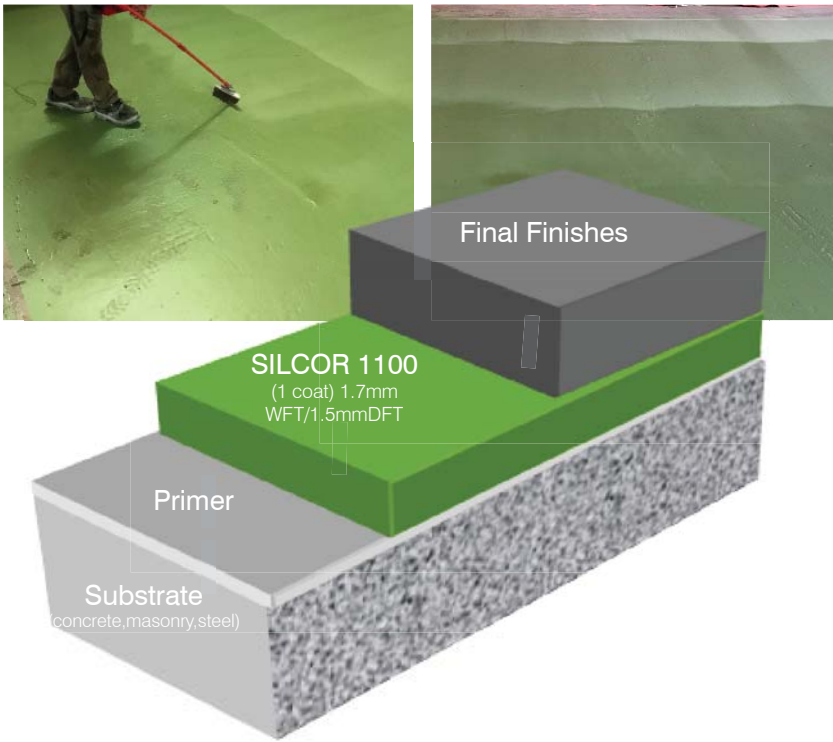
Super Structure

SILCOR 1100

1 coat cold spray or hand applied liquid waterproofing system for buildings super structure

SILCOR 1100 Values:
Fast & easy to apply,
Seamless, Durable

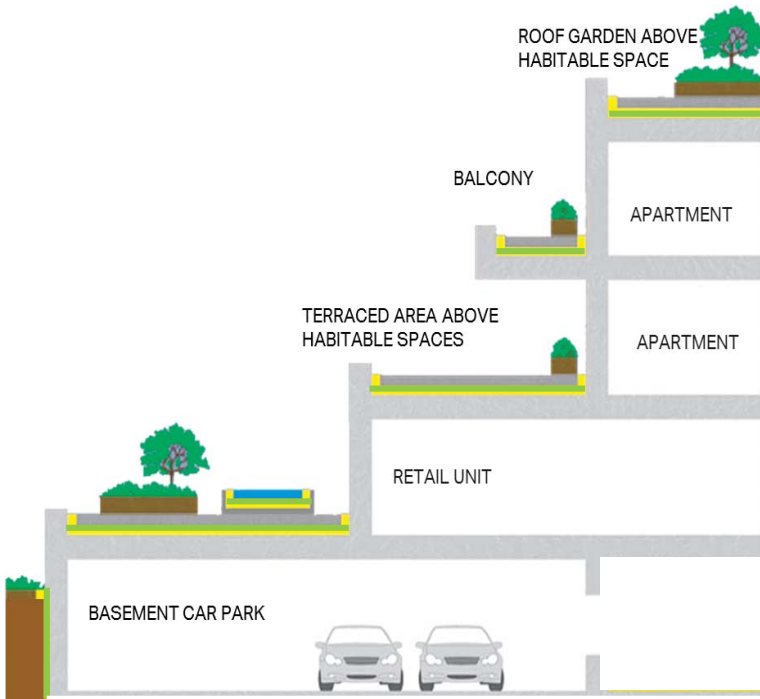
- Unlimited overcoat time enables schedule flexibility, Reduces wastage, Save on labour
- Allows fast return to service
- Proven track record of ESSELAC® long term protection and piece of mind for the building owner



Building Envelope

Area of application

- Buried Podium Decks
- Buried Terraces and Balconies
- Buried Roof decks
- Buried Basement walls



Primary application:

Decks of all Preprufe® projects

Secondary application: Basement walls optional with sheet membrane

GCP De Neef

Produces preventative and remedial waterproofing products and concrete protection and repair products.

These products are manufactured in Belgium, Spain and the United States and are sold throughout the world. De Neef's product lines complement the GCP structural waterproofing and building envelope portfolio by adding a variety of new technologies.



PRESTIGIOUS

PROJECTS EXECUTED

HEALTHCARE

- **AMERICAN HOSPITAL** - DUBAI
(BATHROOM FIXTURES & ACCESSORIES)
- **ROYAL HOSPITAL** - DUBAI
(BATHROOM FIXTURES & ACCESSORIES)
- **CITY HOSPITAL** - DUBAI
(BATHROOM FIXTURES & ACCESSORIES)
- **MEDICLINIC** - AL AIN
(BATHROOM FIXTURES & ACCESSORIES)
- **CLEVELAND CLINIC** - ABU DHABI
(BATHROOM FIXTURES & ACCESSORIES, WATERPROOFING)
- **SAUDI GERMAN HOSPITAL** - DUBAI
(BATHROOM FIXTURES & ACCESSORIES, SURFACES)
- **FUJAIRAH HOSPITAL** - FUJAIRAH
(INDUSTRIAL KITCHEN)
- **SHEIKH KHALIFA SPECIALIST HOSPITAL** - RAK
(INDUSTRIAL KITCHEN)
- **AL AIN HEALTH CLUB** - AL AIN
(INDUSTRIAL KITCHEN)
- **BASCOM PALMER, AUGUST MEDICAL EYE INSTITUTE** - ABU DHABI
(BATHROOM FIXTURES & ACCESSORIES)
- **SHEIKH KHALIFA CENTRAL HOSPITAL** - FUJAIRAH
(BATHROOM FIXTURES & ACCESSORIES)

EDUCATION

- **ABU DHABI FUTURE SCHOOL PROGRAM** - AL AIN
(BATHROOM FIXTURES & ACCESSORIES)
- **AMERICAN UNIVERSITY** - SHARJAH
(BATHROOM FIXTURES & ACCESSORIES)
- **ROYAL BRITISH COMPANY** - DUBAI
(BATHROOM FIXTURES & ACCESSORIES, SURFACES)
- **YAS ISLAND SCHOOL** - ABU DHABI
(SURFACES)
- **GEMS AMERICAN ACADEMY** - ABU DHABI
(SURFACES)
- **SHEIKH FATIMA NURSE ACADEMY** - ABU DHABI
(DOMESTIC KITCHEN)
- **EMIRATES NATIONAL SCHOOL** - SHARJAH, RAK, ABU DHABI
(INDUSTRIAL KITCHEN)
- **SHEIKH ZAYED DESERT LEARNING CENTER** - AL AIN
(WATERPROOFING)
- **MASDAR INSTITUTE FOR SCIENCE AND TECHNOLOGY** - ABU DHABI
(WATERPROOFING)
- **LIBRARY, AMENITY & CIGAR LOUNGE** - SADIYAT, ABU DHABI
(INDUSTRIAL KITCHEN)
- **NORD SCHOOL** - DUBAI
(INDUSTRIAL KITCHEN)
- **DUBAI COLLEGE SPORTS** - DUBAI
(INDUSTRIAL KITCHEN)
- **HIGHER COLLEGES OF TECHNOLOGY** - ABU DHABI
(BATHROOM FIXTURES & ACCESSORIES)
- **MEZHER SECONDARY SCHOOL** - DUBAI
(BATHROOM FIXTURES & ACCESSORIES)
- **DUBAI COLLEGE SPORTS HALL** - DUBAI
(BATHROOM FIXTURES & ACCESSORIES)
- **AL QASIMIYA BOYS & GIRLS COLLEGE** - DUBAI
(BATHROOM FIXTURES & ACCESSORIES)
- **SUMMIT INTERNATIONAL SCHOOL** - ABU DHABI
(BATHROOM FIXTURES & ACCESSORIES)
- **HIGHER COLLEGES OF TECHNOLOGY BANIYAS** - ABU DHABI
(BATHROOM FIXTURES & ACCESSORIES)
- **STS SCHOOL BANIYAS** - ABU DHABI
(BATHROOM FIXTURES & ACCESSORIES)
- **ZAYED MILITARY UNIVERSITY** - ABU DHABI
(WATERPROOFING)
- **FATIMA COLLAGE** - AJMAN
(BATHROOM FIXTURES & ACCESSORIES)
- **SHEIKH ZAYED DESERT LEARNING CENTER** - DUBAI
(SURFACES)

RESIDENTIAL

- **EMAAR BURJ RESIDENCE** - DUBAI
(BATHROOM FIXTURES & ACCESSORIES)
- **VICTORY HEIGHTS VILLAS** - DUBAI
(BATHROOM FIXTURES & ACCESSORIES)
- **DAMAC AKOYA** - DUBAI
(BATHROOM FIXTURES & ACCESSORIES)
- **AL RAHA COMPLEX** - ABU DHABI
(BATHROOM FIXTURES & ACCESSORIES, SURFACES)
- **PALM JUMEIRAH VILLAS** - DUBAI
(BATHROOM FIXTURES & ACCESSORIES, SURFACES)
- **SEVENTH HEAVEN LUXURY APARTMENTS** - DUBAI
(WATERPROOFING, IRONMONGERY)
- **SARAYA TOWERS** - ABU DHABI
(SURFACES)
- **CREEK HORIZON - CREEK HARBOUR** - ABU DHABI
(BATHROOM FIXTURES & ACCESSORIES)
- **HARBOUR VIEWS** - DUBAI
(BATHROOM FIXTURES & ACCESSORIES)
- **BINGHATTI TULIP** - DUBAI
(WATERPROOFING)
- **ADNEC CAPITAL CENTER** - ABU DHABI
(SURFACES)
- **DOWNTOWN VIEWS RESIDENTIAL TOWER** - DUBAI
(BATHROOM FIXTURES & ACCESSORIES)
- **DUBAI CREEK HARBOUR** - DUBAI
(BATHROOM FIXTURES & ACCESSORIES)
- **MARBELLA VILLAGE** - DUBAI SPORTS CITY, DUBAI
(BATHROOM FIXTURES & ACCESSORIES)
- **AKOYA OXYGEN VILLAS** - DUBAI
(BATHROOM FIXTURES & ACCESSORIES)
- **“M” TOWERS** - ABU DHABI
(BATHROOM FIXTURES & ACCESSORIES)
- **G+2P+6 RESIDENTIAL BUILDING PLOT 3347345** - DUBAI
(DOMESTIC KITCHEN)
- **AL RAHA BEACH BUILDING** - ABU DHABI
(SURFACES)
- **ADNEC CAPITAL CENTER** - ABU DHABI
(SURFACES)
- **SULTAN BIN RASHED SAEED AL DHAHIRI COMMERCIAL / RESIDENTIAL BUILDING** - ABU DHABI
(SURFACES)

COMMERCIAL

- **DUBAI AIRPORT** - DUBAI
(BATHROOM FIXTURES & ACCESSORIES, WATERPROOFING)
- **BURJ KHALIFA, PUBLIC AREAS** - DUBAI
(BATHROOM FIXTURES & ACCESSORIES)
- **SHARJAH AIRPORT** - SHARJAH
(BATHROOM FIXTURES & ACCESSORIES)
- **ETIHAD TOWER** - ABU DHABI
(BATHROOM FIXTURES & ACCESSORIES)
- **YAS MALL** - ABU DHABI
(BATHROOM FIXTURES & ACCESSORIES)
- **MIRDIF CITY CENTRE (CINESTAR CINEMAS)** - DUBAI
(SURFACES)
- **OPERA HOUSE** - DUBAI
(SURFACES)
- **GEMINI BUILDING** - ABU DHABI
(SURFACES)
- **SAHARA MALL** - SHARJAH
(BATHROOM FIXTURES & ACCESSORIES)
- **ALDAR HQ BUILDING** - ABU DHABI
(WATERPROOFING)
- **LIVESTOCK MARKET** - SHARJAH
(BATHROOM FIXTURES & ACCESSORIES)
- **FUJAIRAH EMIRATE RESIDENTIAL & COMMERCIAL BUILDING** - FUJAIRAH
(BATHROOM FIXTURES & ACCESSORIES)

- **EXPO 2020 SAUDI PAVILLION** - DUBAI
(BATHROOM FIXTURES & ACCESSORIES)
- **DANET, AL QUDRA COMMERCIAL BUILDING** - ABU DHABI
(BATHROOM FIXTURES & ACCESSORIES)
- **AL HILAL BANK TOWER** - ABU DHABI
(BATHROOM FIXTURES & ACCESSORIES)
- **ABU DHABI FINANCIAL CENTER** - ABU DHABI
(BATHROOM FIXTURES & ACCESSORIES)
- **EXPO 2020 PAVILION** GLIMMER HOLDING LLC SUSHIRO - DUBAI
(SURFACES)
- **AL AIN ZOO DISTRICT** - AL AIN
(BATHROOM FIXTURES & ACCESSORIES)
- **ONE ZA'ABEEL** - DUBAI
(WATERPROOFING)
- **EGA POTLINES 1 2 & 3** EXTN REDUCTION CONCRETE WORKS TAWEELAH - ABU DHABI - DUBAI
(WATERPROOFING)
- **ZAYED ROAD MAIN TUNNEL** - DUBAI
(WATERPROOFING)
- **MAJID MOHAMMAD MAJID AL FUTTAIM VILLA PLOT (B) NO.134-0767, AL MAMZAR** - DUBAI
(WATERPROOFING)
- **NESTO B+G+1 SHOPPING CENTER AT PLOT NO. 5996679, JEBEL ALI INDUSTRIAL 1** - DUBAI
(WATERPROOFING)

HOSPITALITY

- **BURJ AL ARAB** - DUBAI
(BATHROOM FIXTURES & ACCESSORIES)
- **FAIRMONT HOTEL** - DUBAI
(BATHROOM FIXTURES & ACCESSORIES)
- **RIXOS THE PALM** - DUBAI
(BATHROOM FIXTURES & ACCESSORIES)
- **EMIRATES PALACE** - ABU DHABI
(INDUSTRIAL KITCHEN , WATERPROOFING, BATHROOM FIXTURES & ACCESSORIES)
- **SAADIYAT ISLAND RESORT** - ABU DHABI
(INDUSTRIAL KITCHEN)
- **W HOTEL** - DUBAI
(INDUSTRIAL KITCHEN)
- **GRAND MARINA INTERNATIONAL HOTEL** - ABU DHABI
(BATHROOM FIXTURES & ACCESSORIES)
- **JEBEL ALI PARK HOTEL** - DUBAI
(SURFACES)
- **YOTEL HOTEL** - DUBAI
(SURFACES)
- **MIRKAAZ MALL** - AJMAN
(WATERPROOFING)
- **VIDA HOTEL & RESIDENCES** - DUBAI
(WATERPROOFING)
- **SAIF AL HATHBOOR HOTEL** - DUBAI
(BATHROOM FIXTURES & ACCESSORIES)
- **DOUBLE TREE HILTON** - SHARJAH
(BATHROOM FIXTURES & ACCESSORIES)
- **HILTON HOTEL** - DUBAI
(BATHROOM FIXTURES & ACCESSORIES)
- **ROYAL ATLANTIS RESORT & RESIDENCE** - DUBAI
(BATHROOM FIXTURES & ACCESSORIES)
- **HARBOUR VIEWS** - DUBAI
(BATHROOM FIXTURES & ACCESSORIES)
- **RESI TOWER** - DOWNTOWN, DUBAI
(BATHROOM FIXTURES & ACCESSORIES)
- **EMAAR FORTE** - DUBAI
(BATHROOM FIXTURES & ACCESSORIES)
- **ROTANA BEACH HOTEL** - ABU DHABI
(BATHROOM FIXTURES & ACCESSORIES)
- **ADNEC CAPITAL CENTER** - ABU DHABI
(PREMIUM KITCHEN , IRONMONGERY)
- **BINGHATTI HILLS** - DUBAI
(WATERPROOFING)
- **VIDA HOTEL & RESIDENCES** - DUBAI
(BATHROOM FIXTURES & ACCESSORIES)

- **ONE CENTRAL HOTEL** - DUBAI
(SURFACES)
- **MARRIOTT COURTYARD CULTURAL VILLAGE HOTEL** - DUBAI
(SURFACES)

GOVERNMENT

- **JEBEL ALI POLICE STATION** - DUBAI
(BATHROOM FIXTURES & ACCESSORIES)
- **POLICE STATION IN AL SAAD AND AL JIMI** - AL AIN
(BATHROOM FIXTURES & ACCESSORIES)
- **POLICE ACADEMY** - AL AIN
(BATHROOM FIXTURES & ACCESSORIES)
- **KHALIFA POLICE STATION** - ABU DHABI
(INDUSTRIAL KITCHEN)
- **ZADCO** - ABU DHABI
(INDUSTRIAL KITCHEN)
- **ARMED FORCES OFFICERS CLUB & HOTEL** - ABU DHABI
(WATERPROOFING)
- **ROUTE 2020 METRO RAIL** - DUBAI
(WATERPROOFING)
- **COMBINED CYCLE POWER PLANT (CCPP)** - DUBAI
(WATERPROOFING)
- **KSA PAVILION EXPO 2020** - DUBAI
(WATERPROOFING)
- **ENOC PETROL STATION** - SHARJAH
(BATHROOM FIXTURES & ACCESSORIES)
- **SHARJAH POLICE STATION** - SHARJAH
(BATHROOM FIXTURES & ACCESSORIES)
- **AJMAN POLICE STATION** - AJMAN
(BATHROOM FIXTURES & ACCESSORIES)
- **ADNOC OFFSHORE** - DAS ISLAND
(INDUSTRIAL KITCHEN)
- **ADNOC GAS PROCESSING SUBSTATION** - ABUDHABI
(SURFACES)
- **ENOC** - DUBAI, AJMAN, SHARJAH
(BATHROOM FIXTURES & ACCESSORIES)
- **ADNEC CAPITAL CENTRE** - ABU DHABI
(DOMESTIC KITCHEN)
- **POLICE MODEL SCHOOL, AL FOAH** - AL AIN
(BATHROOM FIXTURES & ACCESSORIES)

LUXURY

- **THE PRESIDENTIAL PALACE** - ABU DHABI
(INDUSTRIAL KITCHEN)
- **VVIP VILLA KITCHEN** - ABU DHABI
(DOMESTIC KITCHEN)
- **THE PRESIDENTIAL PALACE** ANNUAL MAINTENANCE - ABU DHABI
(INDUSTRIAL KITCHEN)
- **VIP PALACE** - ABU DHABI
(INDUSTRIAL KITCHEN)
- **VIP PALACE** - ABU DHABI
(INDUSTRIAL KITCHEN, BATHROOM FIXTURES & ACCESSORIES)
- **VIP PALACE** - ABU DHABI
(DOMESTIC KITCHEN, INDUSTRIAL KITCHEN)
- **VIP VILLA** - RAK
(DOMESTIC KITCHEN)
- **REEM ISLAND, RESIDENTIAL TOWER** - ABU DHABI
(BATHROOM FIXTURES & ACCESSORIES)
- **ROYAL VILLA** - RAK
(WATERPROOFING)
- **H.H SHEIKH KHALIFA BIN ZAYED AL NAHYAN MASJID** - RAK
(DOMESTIC KITCHEN)



Burj Khalifa, Dubai, UAE



Burj Al Arab, Dubai, UAE



Emirates Palace, Abu Dhabi, UAE



Opera House, Dubai UAE



W Hotel, Dubai, Uae



Rotana Beach Hotel, Abu Dhabi, UAE



Sheikh Khalifa Specialist Hospital, Ras Al Khaimah, UAE



Saadiyat Island Resort Development, Abu Dhabi, UAE



Palm Island Jumeirah Villas, Dubai, UAE



Victory Heights Villas, Dubai, UAE



City Hospital, Dubai, UAE



Presidential Palace, Abu Dhabi, UAE



Jumairah Creekside Hotel, Dubai, UAE



Aldar HQ Building, Abu Dhabi, UAE



Habtoor Hotels, Dubai, UAE

Get in touch with us!

Abu Dhabi - Headquarters

Saeed Bin Ahmed Al Otaiba Street (Ex. Najda St.)
Building 510, Abu Dhabi - U.A.E.
T: +971 2 633 4425

Dubai - Office and Warehouse

Al Quoz Industrial Area 2, Dubai - U.A.E.
T: +971 4 338 5929

Dubai - Showroom

Eiffel Bldg. Showroom No. 9 & 10, GF.
Umm Al Sheif, Sheikh Zayed Road, Dubai
T: +971 4 551 9579

Al Ain - Showroom

Mohamad Bin Khalifah Street, Al Ain -U.A.E.
T: +971 3 763 1609

Musaffah - Warehouse

M15, Musaffah, Abu Dhabi - U.A.E.
T: +971 2 555 4166



www.sultaco.com



SULTACO سلطانة

GENERAL TRADING LLC للتجارة العامة ذ.م.م
Since 1968

Abu Dhabi • Dubai • Al Ain

www.sultaco.com